

# WodaLife Single

## Atmospheric Water Generator

This manual guides you step by step through the installation, daily operation, maintenance, and troubleshooting of your WodaLife Single atmospheric water generator. Please read it carefully before first use.



# Safety Instructions



## Grounding

The outlet must have reliable grounding and a 10 A capacity.



## Power Cable

Do not remove the ground terminal. Do not use an extension cord or adapter.



## Keep Away from Hazards

Keep the unit away from toxic gases and liquids.



## Intact Cable

Do not use a damaged plug or power cable.



## Disconnect Before Servicing

Unplug the cord before any cleaning, installation, or maintenance.



## Dedicated Outlet

Do not share the outlet with other high-power appliances.



## Dry Hands

Never disconnect the cord with wet hands.



## Supervision Required

Vulnerable persons and children must use the machine under supervision.



## Children

Ensure that children do not use the machine unsupervised.



## Transport

Do not tilt the machine more than 20° during transport. Wait 12 hours before commissioning.

# Precautions

- Place the appliance on a horizontal, stable surface, at least 30 cm from the wall
- Do not use outdoors
- Avoid prolonged exposure to direct sunlight
- Keep the appliance in an upright position
- The operating voltage must not drop by more than 10% compared with the standard power supply
- Avoid prolonged direct exposure of the eyes to the UV device
- Not suitable for use in areas exposed to water splashes
- If the ambient temperature drops below 5°C, drain any remaining water and stop operation
- If the power cables are damaged, have them repaired or replaced by an authorized person
- Do not place objects on top of the machine; ensure good air circulation around the appliance

# How does it work?

WodaLife Single produces water from the moisture naturally present in the air. Its production capacity therefore depends directly on ambient conditions, primarily the room's humidity level and temperature.

Best performance is achieved in a warm, ventilated, and sufficiently humid environment. The more moisture the air contains, the faster water is produced. Conversely, when the air is drier or when the temperature is low, production naturally slows down.

To optimize the unit's operation, it is recommended to install it in a well-ventilated room with free space around the machine. Living areas, kitchens, laundry rooms, or spaces that are naturally more humid can support better production. During cold periods or in a very dry room, the amount of water produced may be reduced.

**Condensation**

**Collecte et filtration**

**Aspiration d'air**

**Stérilisation UV**



# Features

The WodaLife Single 15L was designed to provide a compact, reliable, and elegant atmospheric water generation solution. It combines air humidity capture, multi-stage filtration, UV treatment, and intelligent controls to ensure simple, secure, and high-performance daily use.

Each component of the unit has been designed to promote operational stability, water quality, and user comfort



## Electronic sensors

WodaLife Single includes integrated sensors that monitor the essential components of the unit, including the UV lamps and the water levels in the tanks.

If an anomaly is detected, an alert is displayed automatically to enable rapid intervention and preserve safe operation.



## Energy efficiency

When the water tank is full, WodaLife Single automatically disables the relevant functions to avoid unnecessary consumption.



## Water leak detector

WodaLife Single is equipped with a leak detection system located at the chassis level.

If abnormal water is present, the unit triggers an alert and automatically stops operating to protect the machine and ensure safe use.



## Variable-frequency compressor

WodaLife Single is equipped with a variable-frequency compressor, designed to automatically adapt its operation to ambient conditions, including temperature and humidity levels.



## Multi-stage filtration

WodaLife Single integrates a multi-stage filtration system.



## UV sterilization

WodaLife Single is equipped with integrated UV lamps, positioned at the upper and lower tanks.



## Water recirculation

WodaLife Single includes an internal recirculation system designed to preserve the quality of the water stored in the unit.

# Initial Installation

Correct installation is the guarantee of optimal performance and maximum service life for your WodaLife Single appliance. Follow the steps below carefully before first use.

01

---

## Check and position the accessories

Upon delivery, check all supplied accessories, then move the machine to a well-ventilated area and place it on a level surface. Ensure that the rear of the machine is at least **30 cm** from the wall. Press the locking wheels at the front to secure it in place.

02

---

## Wait 12 hours before powering on

Due to possible turbulence during transport, the refrigerant may not yet have fully returned to the compressor. To protect the compressor, wait **12 hours** before powering on the unit.

03

---

## Electrical connection

Insert the plug into a socket with a load capacity of **10 amperes**.

04

---

## Configure the external water supply

When connecting to an external water source, purchase the appropriate piping accessories from WodaLife. Refer to the "Operating Instructions" chapter for the installation diagram.

05

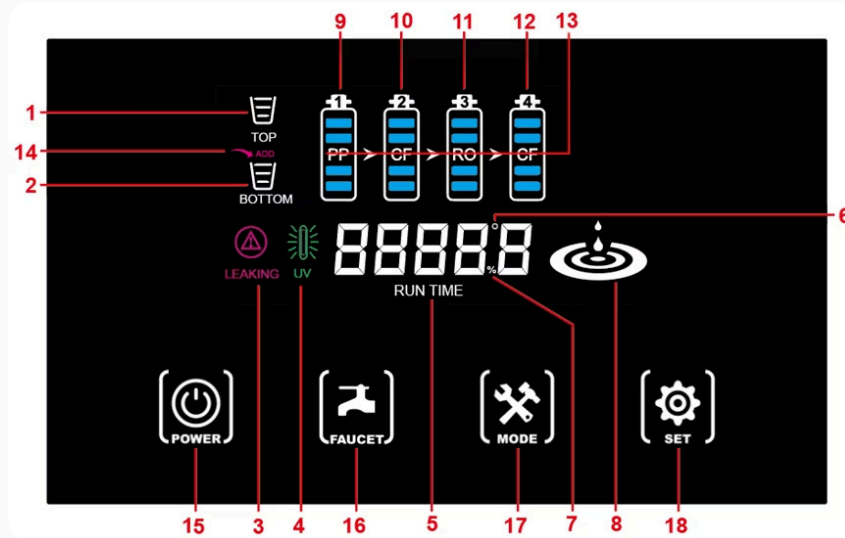
---

## Prepare the lower tank

Remove the carbon-coated covering film from the lower water tank and remove the protective cap from the tap before first use.

# Control Panel and Display

## Display Indicators



1. Upper tank water level No bar displayed: the tank is empty. Three flashing bars: the tank is full.
2. Lower tank water level No bar displayed: the tank is empty. Three flashing bars: the tank is full.
3. Leak alarm icon In normal operation, the icon is not displayed. If "LEAKING" flashes on the display, a water leak has been detected.
4. UV lamp indicator Steady icon: the UV lamp is operating. Flashing icon: the UV lamp has a fault and must be inspected or replaced.
5. Ambient temperature and humidity In normal operation, the display shows the ambient temperature and humidity level. U1-FA: upper tank UV lamp fault. U3-FA: lower tank UV lamp fault.
6. Temperature unit Indicates the temperature unit shown on the display.
7. Humidity unit Indicates the humidity unit shown on the display.
8. Water production indicator Moving icon: water production is in progress. Steady icon: water production is ready to start. Flashing icon: low-temperature or low-humidity protection is active. Icon off: water production function is disabled.
9. WodaLife Single F1 filter All grids flash: filter replacement is required.
10. WodaLife Single F2 filter All grids flash: filter replacement is required.
11. WodaLife Single F3 filter All grids flash: filter replacement is required.
12. WodaLife Single F4 filter All grids flash: filter replacement is required.
13. Filtration arrow When the arrow flashes, water is being filtered.
14. Water add icon Steady icon: automatic filling is enabled. Flashing icon: water addition is in progress.
15. Touch-sensitive power button  
Briefly touch the "POWER" button to start the machine after power is connected.  
Press and hold the button to put the unit into standby mode. When the unit is in standby mode, the icon flashes on the display.
16. Touch-sensitive water dispensing button  
Press and hold this button to dispense water.
17. Touch-sensitive Menu button  
Press and hold the "MENU" button to access the settings.  
Then briefly press the same button to scroll through the different menu functions.
18. Touch-sensitive setting button  
After accessing the menu, touch the "SETTING" or "SET" button to modify the value of the selected function.

### Setting menu displays

#### A ON / A OFF

Enables or disables water production from air.

**A ON:** water production enabled.

**A OFF:** water production disabled.

#### P ON / P OFF

Enables or disables automatic external water filling, when this function is installed.

**P ON:** automatic filling enabled.

**P OFF:** automatic filling disabled.

#### \*\*\* °C

Displays the ambient temperature around the unit.

#### 1F\*\*\*

Displays the operating time of filter F1.

After replacing the filter, touch "SETTING" or "SET" to reset the counter.

#### 2F\*\*\*

Displays the operating time of filter F2.

After replacing the filter, touch "SETTING" or "SET" to reset the counter.

#### 3F\*\*\*

Displays the operating time of filter F3.

After replacing the filter, touch "SETTING" or "SET" to reset the counter.

#### 4F\*\*\*

Displays the operating time of filter F4.

After replacing the filter, touch "SETTING" or "SET" to reset the counter.

# Operating Instructions

To ensure optimal operation of your WodaLife Single, please read the following instructions carefully before first use.

Proper use, combined with regular maintenance, helps preserve the appliance's performance, the quality of the water produced, and the longevity of the system. Follow each step carefully to use your atmospheric water generator under the best possible conditions.

1

When the unit is connected for the first time, a sound signal will be emitted and the display will turn on automatically.

After approximately 2 minutes, the compressor starts to initiate the water production cycle.

To stop the unit, press and hold the « **POWER** » touch key until it enters standby mode. To restart it, press and hold the « **POWER** » touch key again.

2

During the first hours of operation, water production is gradual. It is therefore normal for only a small amount of water to be available at startup.

Water can be dispensed as soon as the minimum tank level is reached. Depending on temperature, humidity, and ambient conditions, filling the tanks completely may take several hours, or even a full day.

3

When a filter has been used for some time, the corresponding filter icon on the display. When one of the filters reaches its replacement threshold, the corresponding icon flashes on the screen.

After replacing the relevant filter, press the « **MODE** » key to select the corresponding counter: 1F, 2F, 3F, or 4F.

Then press « **SET** » to reset the filter usage time. Once the reset is completed, the icon stops flashing.

4

When the ambient temperature is below **10 °C** or the humidity level is below **35%**, the compressor may stop automatically to protect the system.

Under these conditions, water production from the air is interrupted or significantly reduced. You may then use an external water supply so that the unit operates in water purification mode.

5

WodaLife Single is equipped with water level sensors that automatically control tank filling.

When the maximum level is reached, the unit automatically stops water production to prevent overflow and reduce unnecessary energy consumption.

6

During first use, allow the unit to produce an initial quantity of water, then let the first 2 liters run out before consuming any water.

This step helps flush the internal circuit and filters. These first liters should not be consumed, but may be used to water plants.

# Cleaning & Filter Replacement

Regular maintenance is essential to preserve water quality, maintain filtration performance, and extend the service life of your WodaLife Single.

Filters must be cleaned or replaced according to their wear level, the unit's usage frequency, and the quality of the ambient air. The schedule below is provided for reference only, based on an average consumption of 10 liters of water per day.

WodaLife Single also features a filter replacement indicator: when the icon for the relevant filter flashes on the display, replacement must be carried out, and the corresponding counter must then be reset from the control panel.

Component	Replacement interval
F1 filter	6 months
F2 filter	6-9 months
F3 filter	15-24 months
F4	6-9 months
UV lamp	Replace when the UV warning appears

- ☐ Replacement intervals may vary depending on the country, region, and usage. The information above is provided for reference only.

# Air Filter Cleaning

## High-Efficiency Air Purification Filter

Please inspect the air filter regularly. When it becomes clogged, replace it with a new one. When replacing, place the white side facing outward.

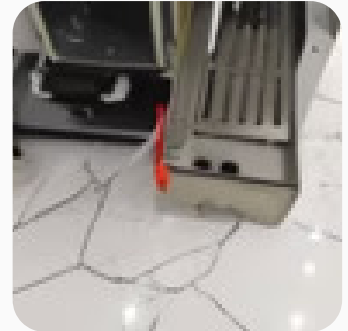
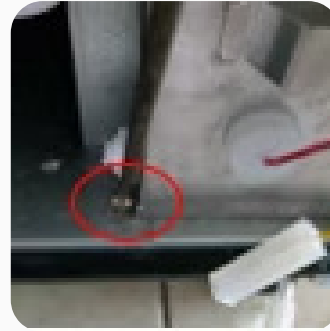
⚠ The air filter must **NOT** be washed with water. Use only an air gun or your hands to gently remove dust.

To ensure better air and water purification, replace the high-efficiency air purification filter in a timely manner.



## Cleaning the Lower Water Tank

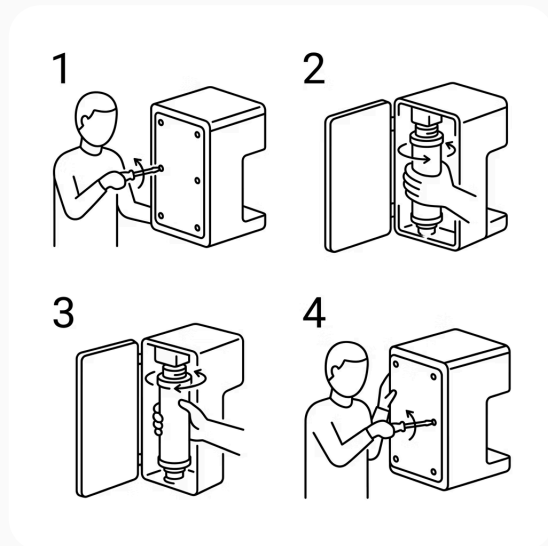
Unscrew the fastening screws of the lower tank, then carefully remove the tank from its position. Next, unscrew the cover screws to access the inside of the tank. Clean the lower tank with clean water, as well as the activated carbon fiber element. After cleaning, return each component to its original position, close the cover, reinstall the screws, and then reinstall the lower tank in the machine.



# Filter Replacement

## Filter replacement method

Please replace the filters as needed to maintain optimal water production performance.



01

---

### Standby & opening


Press and hold the "POWER" icon on the display until the machine enters standby mode. Remove the rear panel using a screwdriver.

02

---

### Filter replacement

To replace filters F1 to F4: unscrew the filter counterclockwise to remove it, then screw in the new filter clockwise until it is firmly seated. Reinstall the rear panel.

 If you need to replace the UV lamp in the upper or lower water tank, please contact WodaLife support: [contact@wodalife.com](mailto:contact@wodalife.com)

# Important Usage Recommendations

We recommend dispensing at least 3 liters of water each day to keep the water fresh and the system active.

After 2 to 5 days of non-use, allow approximately 500 ml of water to flow before consumption.

After more than 5 days without operation, fully drain the unit and restart production.


When the machine has been used for 4 months or has been out of service for more than 7 days, perform a complete cleaning of the machine.

# Troubleshooting Guide

This guide presents the most frequently encountered situations as well as the initial checks to perform.

If the problem persists after following the instructions below, do not attempt to disassemble or repair the appliance yourself. Contact WodaLife Technical Support at the following address: [contact@wodalife.com](mailto:contact@wodalife.com).

Any unauthorized intervention, modification, or repair performed by an unqualified person may damage the appliance, compromise its safe use, and void the warranty.

Observable symptom	Solution
The UV icon flashes with three short beeps, the display shows U1-FA.	Check the UV lamp on the upper tank, make sure the bulb is lit and that all wiring is correct.
The UV icon flashes with three short beeps, the display shows U3-FA.	Check the UV lamp on the lower tank, make sure the bulb is lit and that all wiring is correct.
The machine does not operate when power is connected.	Verify that the voltage is within the normal operating range and that the plug connection is secure.
The machine emits an alert sound and the filter icon flashes.	Replace the relevant filter, then reset the corresponding counter from the control panel. Refer to the section “ <b>Cleaning and replacing filters</b> ” for the detailed procedure.
Water is leaking from the bottom of the machine and the “LEAKING” icon flashes.	<p>Place the machine on standby, then unplug it. Check all internal connections, including the filter hoses, the lower tank hose, the rear drain hose, and the correct position of the water collection tray.</p> <p>Once the cause of the leak has been identified and corrected, remove the rear panel to access the leak detection device. Remove the silicone cap, then gently tilt the machine about 15° toward the wall to drain any remaining water. Then replace the silicone cap, reinstall the rear panel, reconnect the appliance, and restart the machine.</p> 
During cleaning of the upper tank, the drain outlet cannot evacuate the water.	Check whether the outlet cap has been removed.
The water flow from the faucet is low.	<p>Clean the nano filter located inside the faucet, or replace it if necessary.</p> <p>To do this, carefully unscrew the faucet, remove the filter, then clean it or install a new filter. Ensure that the silicone gasket is correctly positioned before reassembling the unit.</p> <p>After reassembly, verify that the flow has returned to normal.</p>
The water production speed slows after prolonged use.	<p>First check the ambient conditions: room temperature, humidity level, and proper air circulation around the appliance.</p> <p>Also ensure that the ventilation openings are not obstructed, that the machine is positioned at a sufficient distance from the wall, and that the supply voltage is correct.</p> <p>Then check the water outlet, the condition of the hoses, and the proper operation of the booster pump. If a hose is bent, obstructed, or improperly connected, production may be slowed.</p>
The display does not show the correct humidity value.	<p>A slight measurement difference is normal. A deviation of less than 5% can be considered acceptable.</p> <p>To compare the values correctly, place WodaLife Single and the hygrometer in the same location, under the same ambient conditions.</p> <p>Also check that the appliance's humidity detection opening is not obstructed, covered, or positioned too close to a wall. Poor air circulation around the sensor may distort the displayed reading.</p>
The machine vibrates and makes noise.	<p>Make sure that no object is placed on top of the appliance and that no glass or accessory is on the dispensing tray.</p> <p>Also verify that the machine is installed on a flat, stable, and perfectly level surface.</p> <p>If the noise persists, open the filter compartment cover and check that the copper tube is not in contact with the side wall. If necessary, move it away very gently, without forcing or bending it.</p> <p>If the vibrations or noise continue after these checks, contact WodaLife Technical Support before any further intervention.</p>

# Using an External Water Supply

Depending on customer needs, the WodaLife Single supports connection to either an external tap water supply or an external water bucket. When connected, the valve opens automatically to draw external water into the lower tank when the water level drops to a certain level or below. To begin pumping water from an external water bucket, press and hold the "SET" button.

## 1 Connect an external water source

Purchase the appropriate water line accessories from WodaLife. Connect external tap water or a water bucket using the supplied water hose kits. Do not use old water piping.

## 2 Automatic filling

Once connected, the machine will automatically open the valve and draw water into the lower tank when the water level is low.

## 3 Manual bucket pumping

To pump water from an external bucket, press and hold the "SET" button on the control panel.

## 4 Low-humidity mode

When the ambient temperature is below 10°C or the humidity is below 30%, the compressor stops and the machine enters external water purification mode using RO filtration and UV sterilization.

# Technical Specifications

The technical specifications of the WodaLife Single have been defined to ensure optimal performance under standard residential and commercial operating conditions.

## Dimensions

- **Height:** 56 cm
- **Width:** 45 cm
- **Depth:** 44 cm
- **Net weight:** 34 kg
- **Power supply:**
  - ☑ 220–240 V~ / 50 Hz / 430 W
  - ☑ 110–120 V~ / 60 Hz / 430 W

**The appliance's maximum total power is 430 W.**

## Operating conditions

- **Operating temperature:** 15°C - 40°C
- **Operating humidity:** 35% - 95%
- **Water storage capacity:** 6 liters

☐ WodaLife reserves the right to make changes, amendments, or variations to the content of this manual at any time and without prior notice.

# Identification, warranty, and recycling

To ensure traceability of your appliance and to facilitate any request to WodaLife customer service, it is essential to retain all identification information for your atmospheric water generator.

## Model

WodaLife Familial atmospheric water generator

## Serial number

The serial number is located on the rear right side of the appliance, on the identification label.

## WodaLife customer service

For any questions regarding installation, use, maintenance, filter replacement, warranty, or troubleshooting, our team is at your disposal.



### Website

[www.wodalife.com](http://www.wodalife.com)



### Email

[contact@wodalife.com](mailto:contact@wodalife.com)

## Warranty

The WodaLife Single appliance is covered by the warranty terms applicable at the time of purchase. This warranty applies under normal use, in accordance with the installation, use, and maintenance instructions provided in this manual.

The warranty may be limited or excluded in the event of improper installation, misuse, inadequate maintenance, unauthorized modification, use of non-compliant parts or filters, repair performed by an unauthorized person, or failure to comply with safety instructions.

For any warranty claim, you may be required to provide proof of purchase, the appliance serial number, photographs of the appliance, and a detailed description of the issue encountered.

## Safety and compliance of use

Before commissioning, it is imperative to read this manual carefully. The appliance must be installed, used, and maintained in accordance with the instructions provided in order to preserve its optimal performance, the quality of the water produced, and the safety of all users. In the event of a persistent fault, immediately unplug the appliance and contact WodaLife customer service for assistance.

## Recycling

This product is electrical and electronic equipment. At the end of its life, it must under no circumstances be disposed of with ordinary household waste. It must be taken to an appropriate collection point, an authorized waste facility, or returned according to the applicable procedures for waste electrical and electronic equipment (WEEE). This responsible and environmentally friendly approach helps promote the recycling of the materials it contains and limit its environmental impact.

## Retention of the manual

Please keep this manual carefully throughout the entire service life of the WodaLife Single appliance. In the event of resale, transfer, or making the appliance available to a third party, this manual must be passed on with the WodaLife generator to ensure continuity of information and safety.